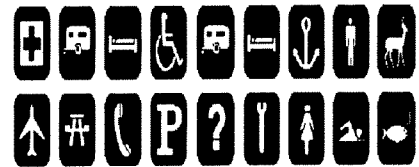
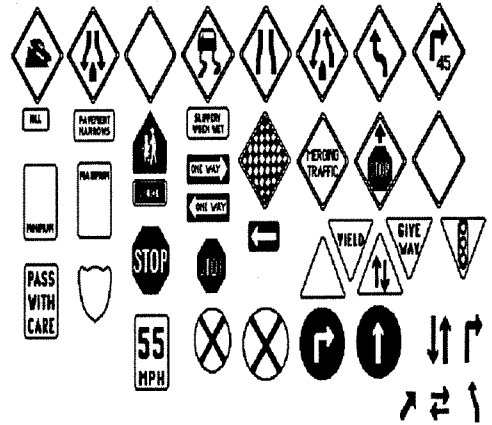


gn

(as in gnat or sign)

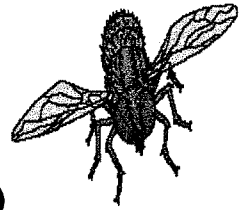
(at the beginning or ending of a word)



resign design benign consign align assign

gnat gnarl gnash gnome gnu

gn



(as in *gnat* or *sign*)
(in the beginning or at the end of a word)
(never in the middle of a word)

gnu gnash gnarl gnome gnu gnaw sign

*re • sign de • sign be • nign con • sign feign

“gnashes his teeth” “a stop sign” “design a tree house”

“farmer’s gnarled hands” “mouse gnaws through the box”

“resign from his job” “a large gnu” “those pesty gnats”

Words to Spell:

gn



(as in *gnat* or *sign*)
(in the beginning or at the end of a word)
(never in the middle of a word)

gnu gnash gnarl gnome gnu gnaw sign

*re • sign de • sign be • nign con • sign feign

“gnashes his teeth” “a stop sign” “design a tree house”

“farmer’s gnarled hands” “mouse gnaws through the box”

“resign from his job” “a large gnu” “those pesty gnats”

Words to Spell:
